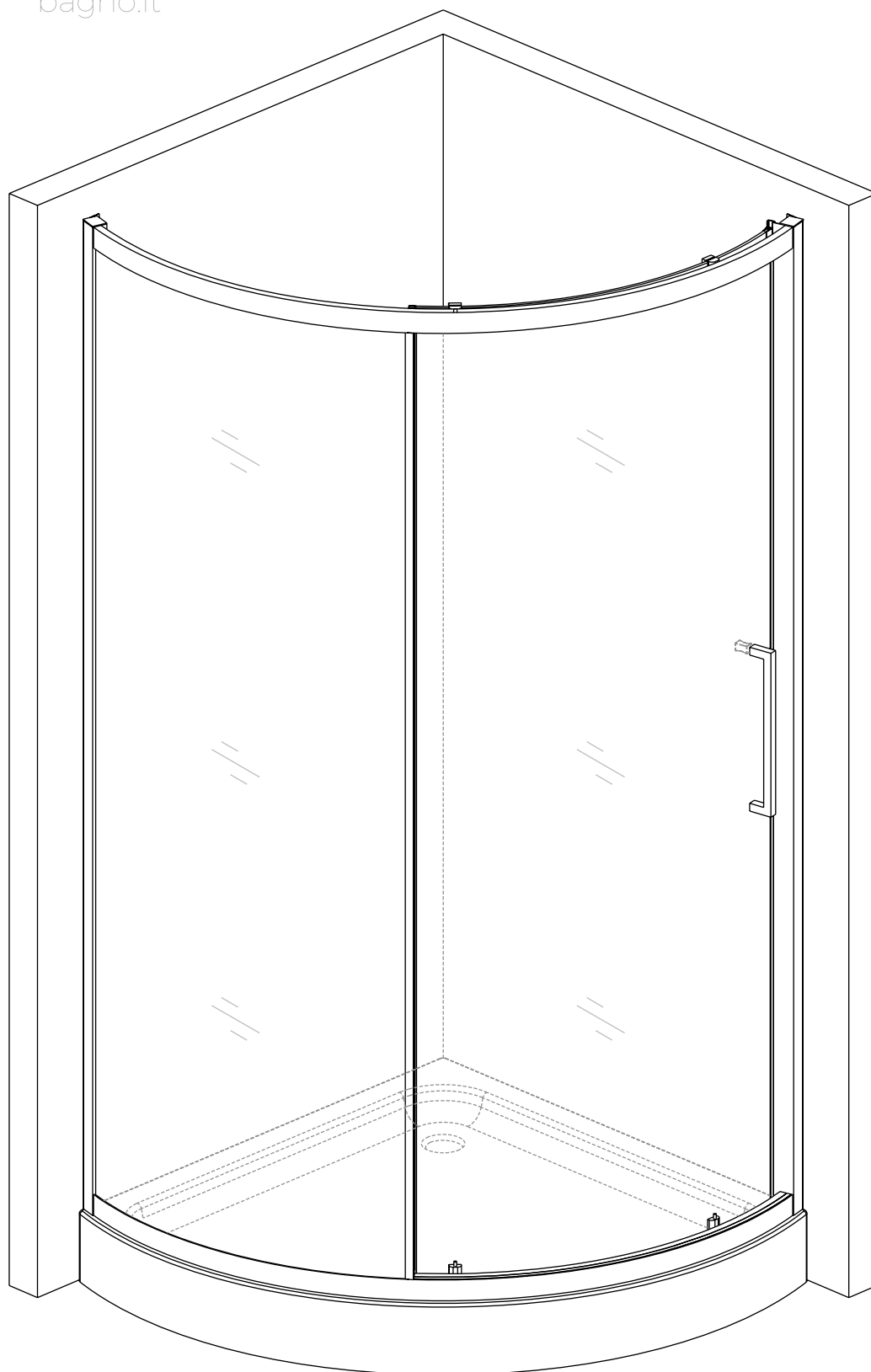


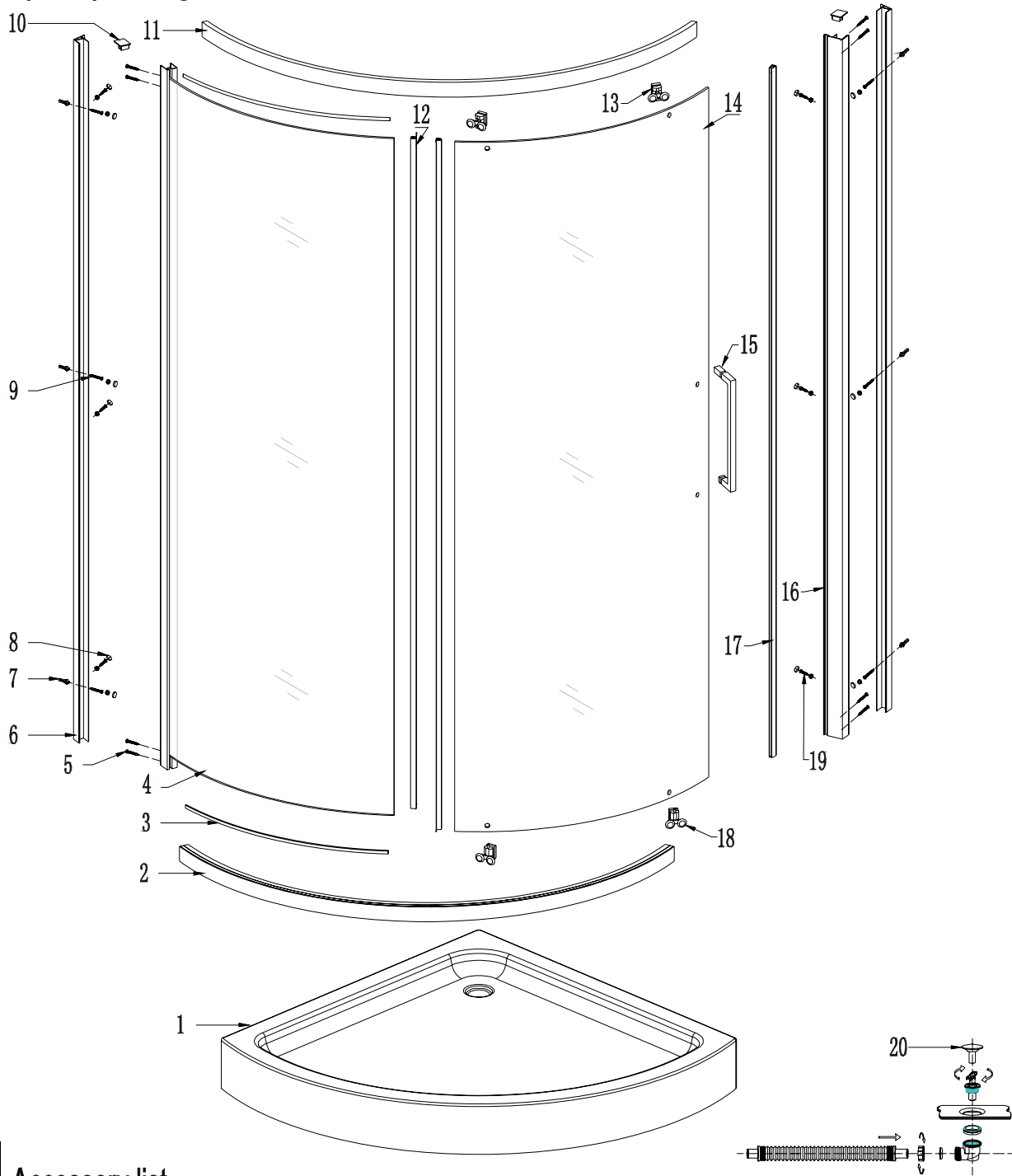
INSTALLATION INSTRUCTION

Shower Box M6000 Kamalu



NOTE:

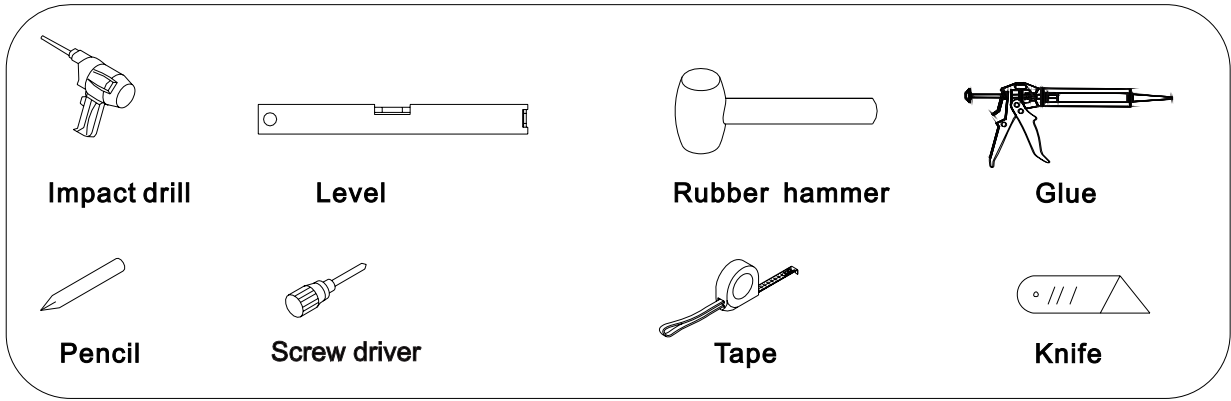
Please read this installation instruction carefully before installing;
 Please check the quantities of the accessories and make sure you have the tools required;
 It may also be necessary to consult your tiling supplier about the correct method for drilling your tiles;
 If any parts missing/damaged or other problems, please contact your local distributor or our company directly and you will get a satisfied answer.



1 Accessory list

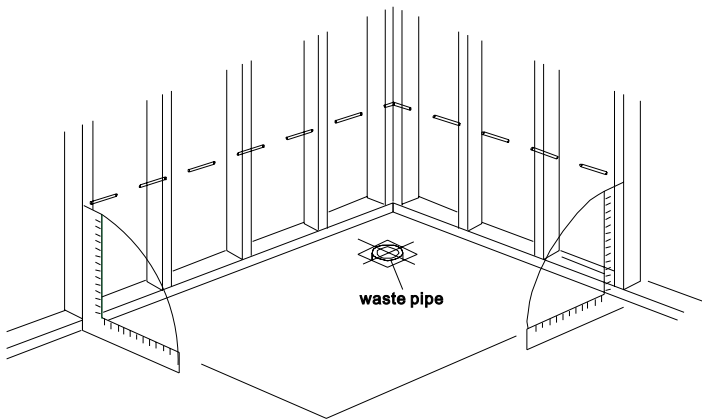
NO	Description	Diagram	Unit	QTY	NO	Description	Diagram	Unit	QTY	NO	Description	Diagram	Unit	QTY
1	tray		pc	1	7	Wall plug		pc	6	14	movable glass		pc	1
2	Track		pc	1	8	Screw cover		pc	12	15	Handle		pc	1
3	rubber gasket		pc	2	9	Screw	 ST4*25	pc	6	16	profile		pc	1
4	fixed door		set	1	10	profile cover		pc	2	17	magnetic tripe		pc	1
5	Screw	 ST4*25	pc	8	11	Track		pc	1	18	Rollre		pc	2
6	profile		pc	2	12	wate bar		pc	2	19	Screw	 ST4*12	pc	6
					13	Rollre		pc	2	20	Standard drainer		set	1

2 Tools for installation

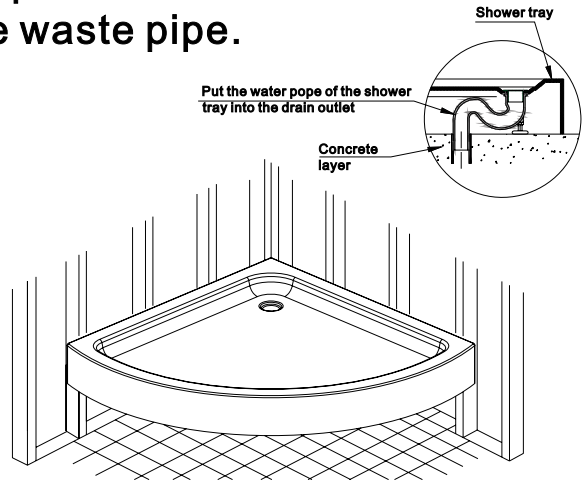


3 Installation of shower tray

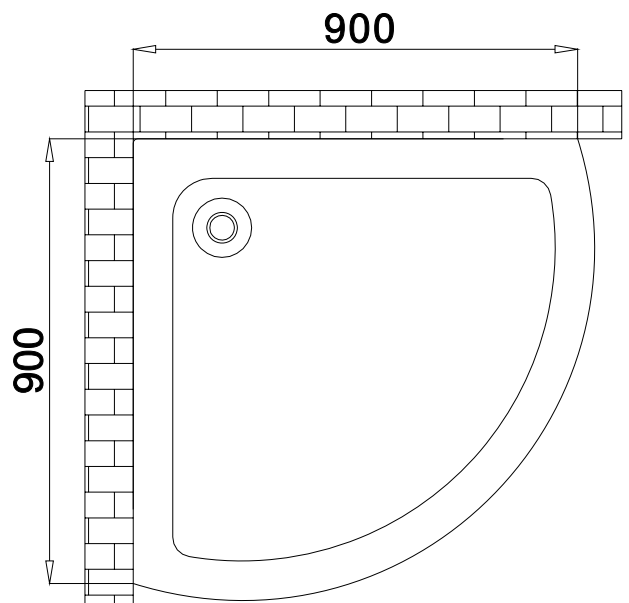
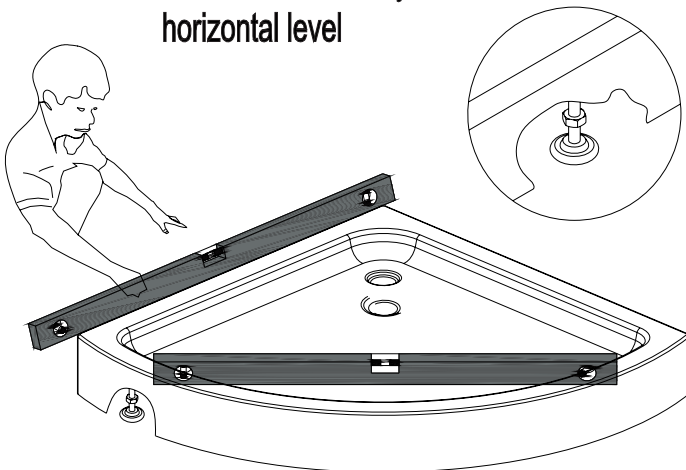
①



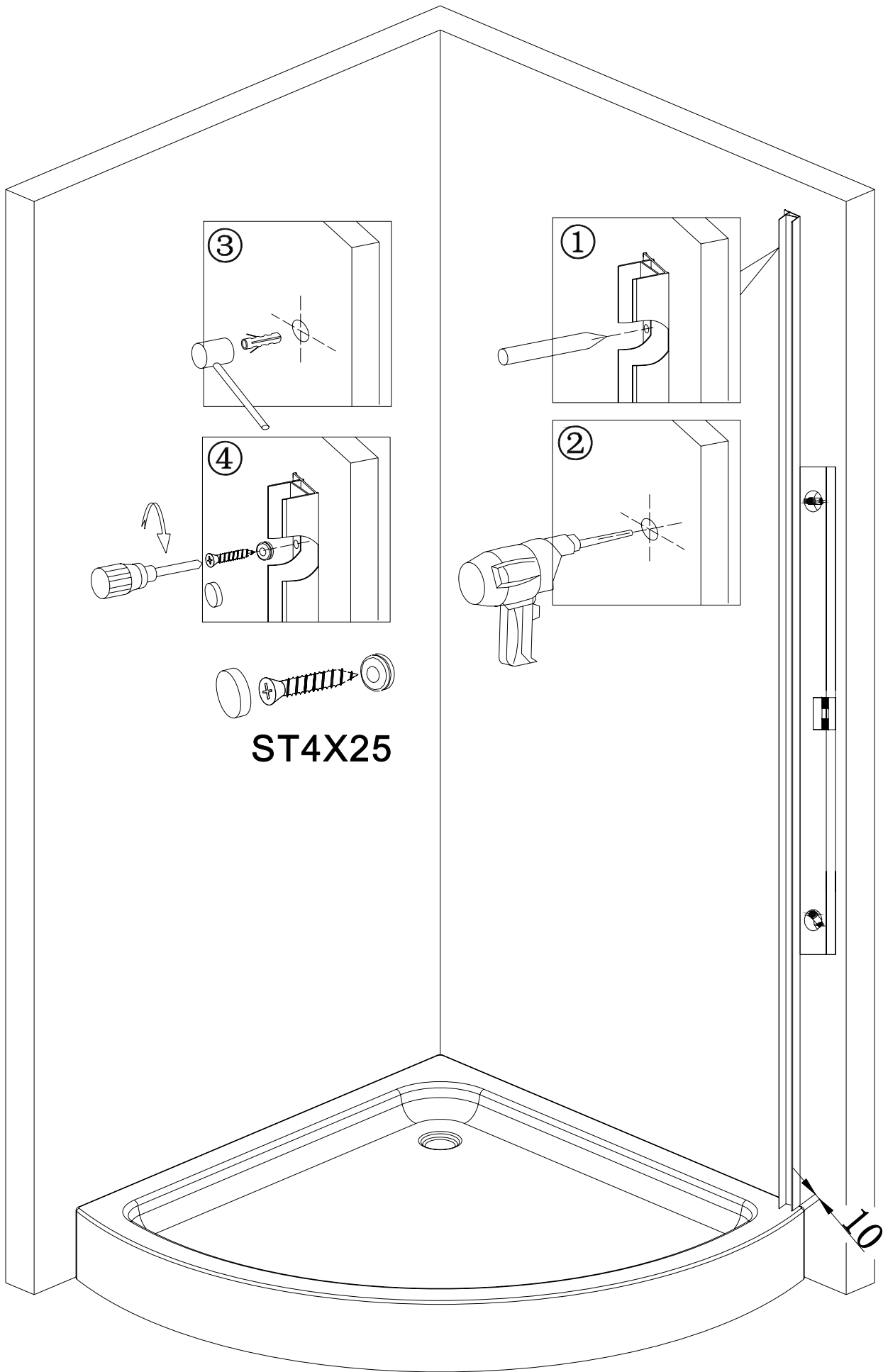
②: place the waste hose into the waste pipe.



③: Ensure the tray is at horizontal level

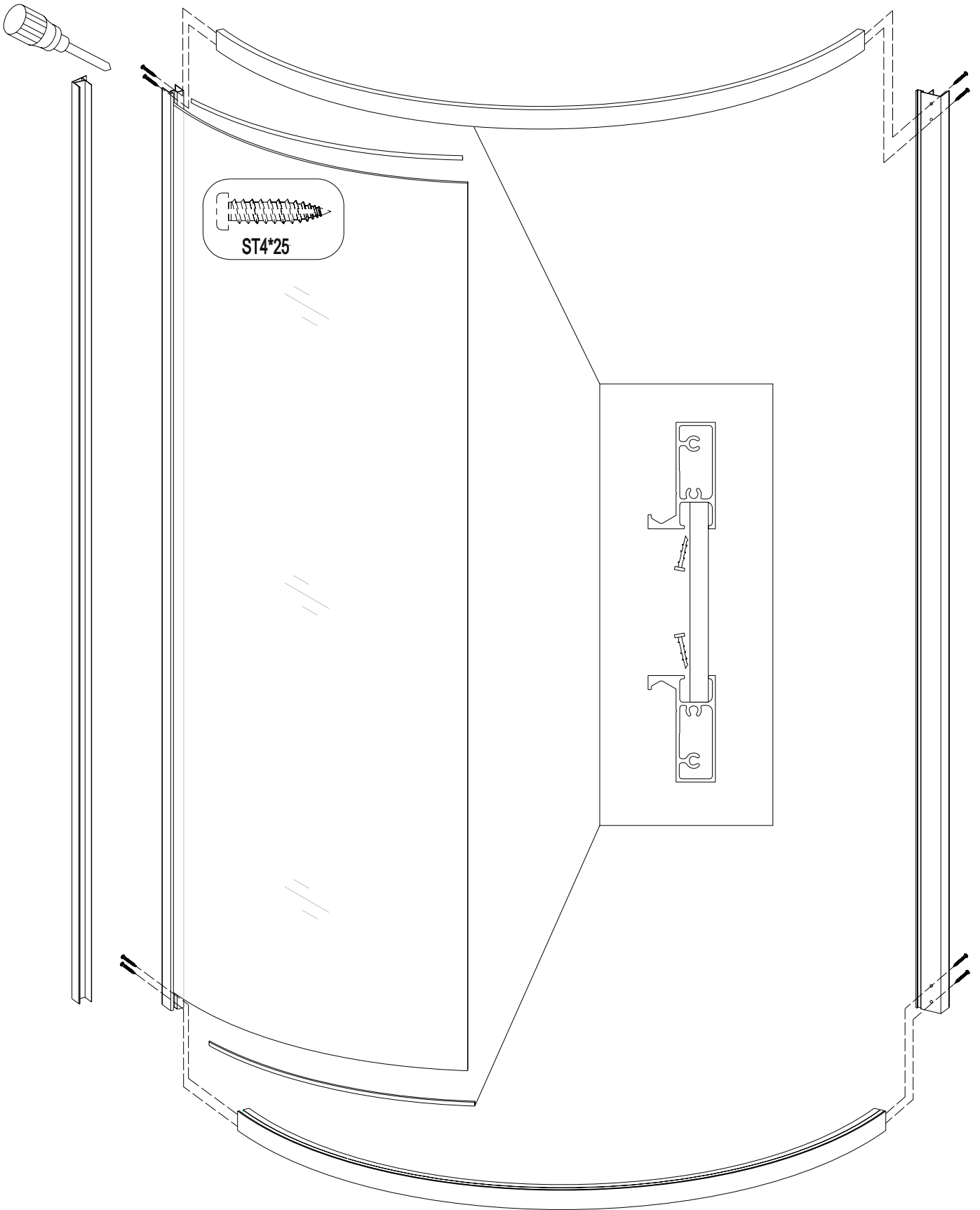


4



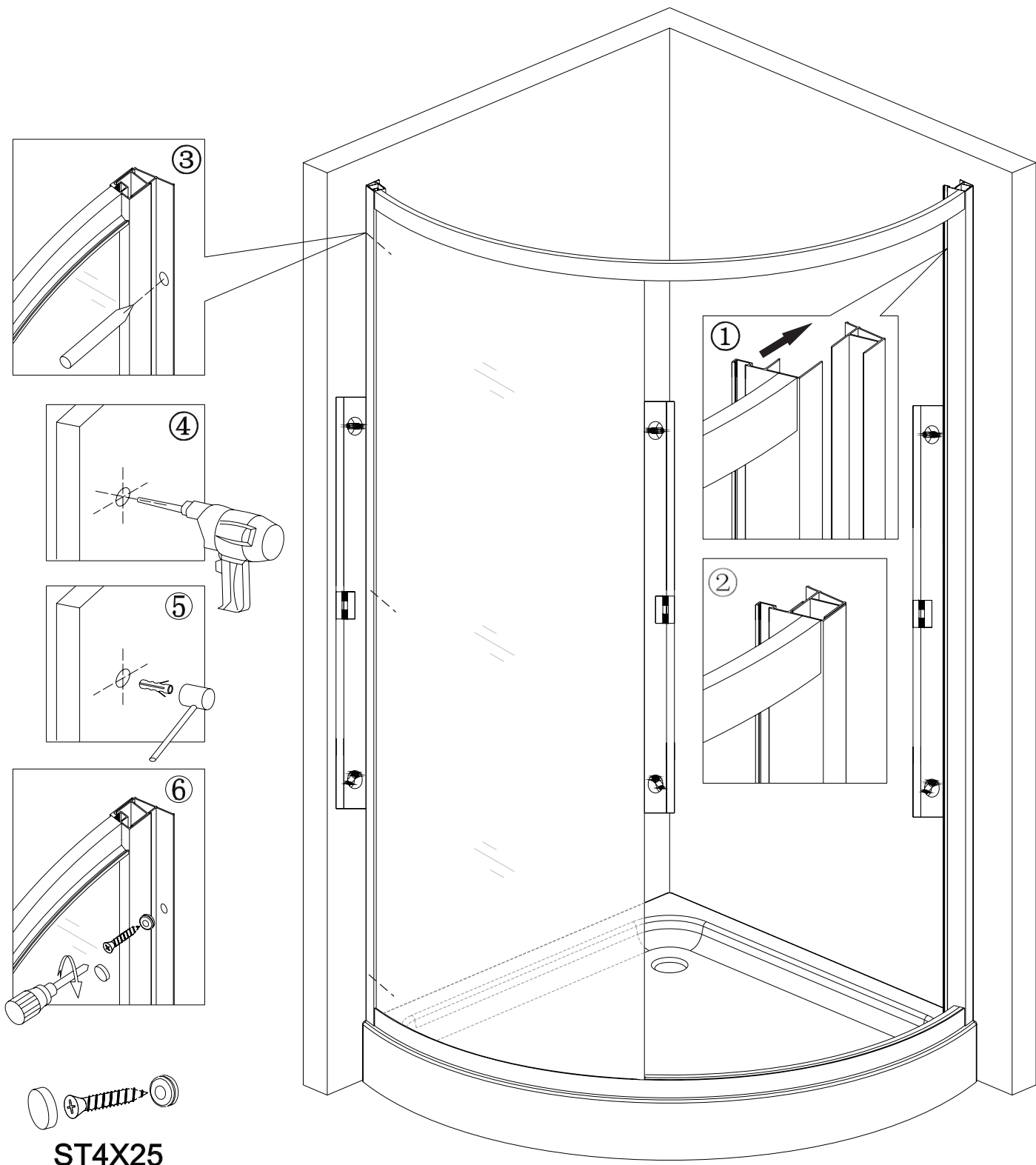
3

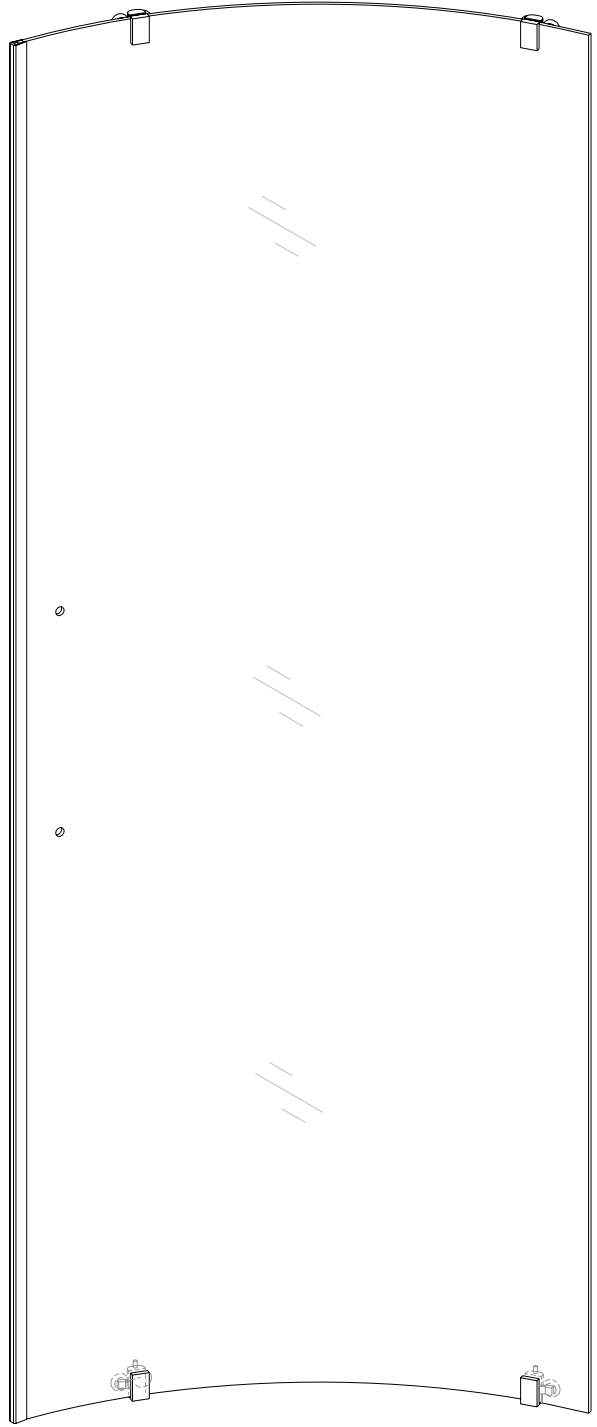
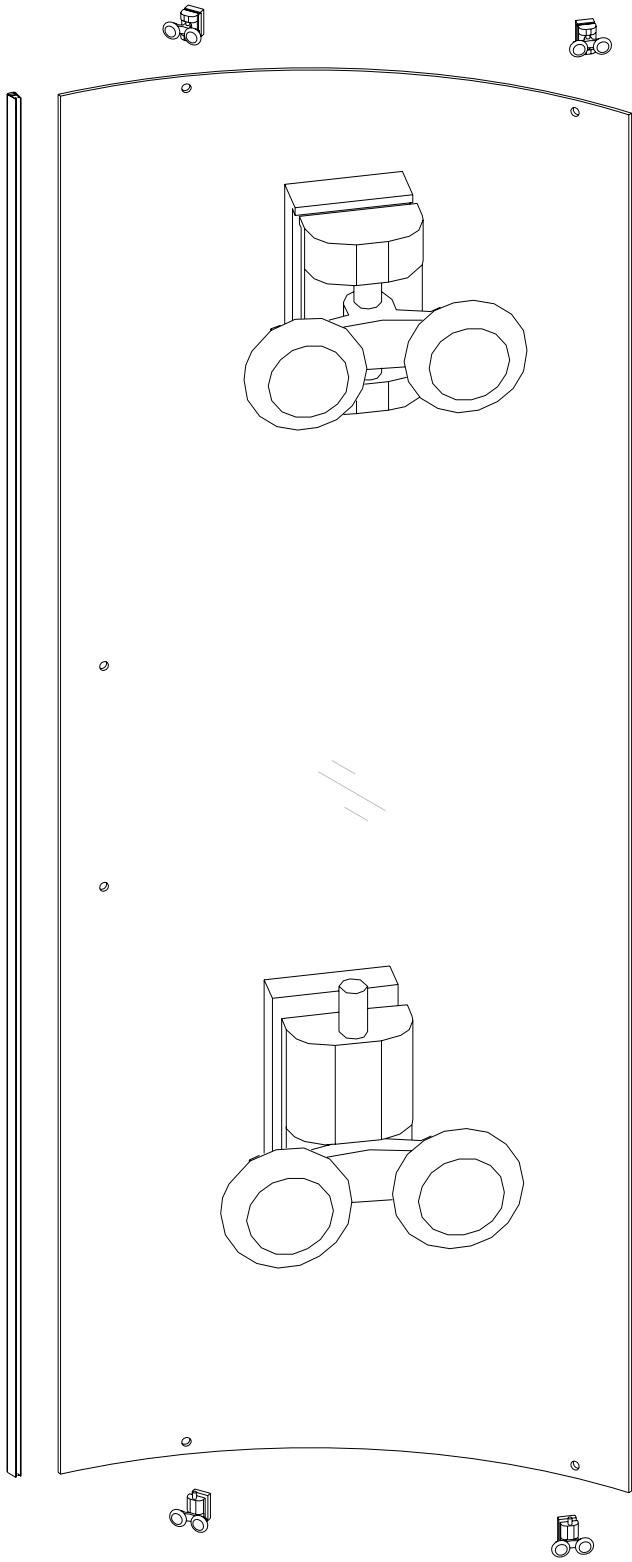
5

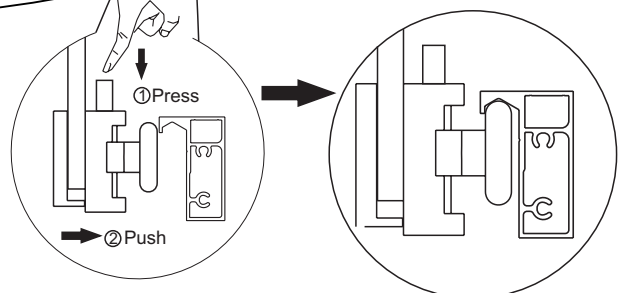
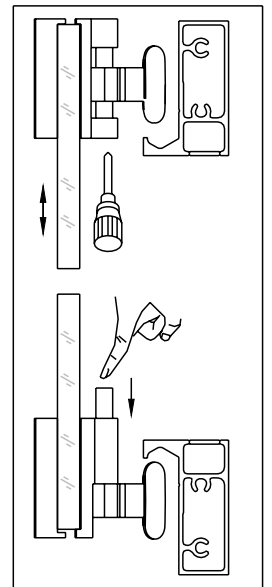
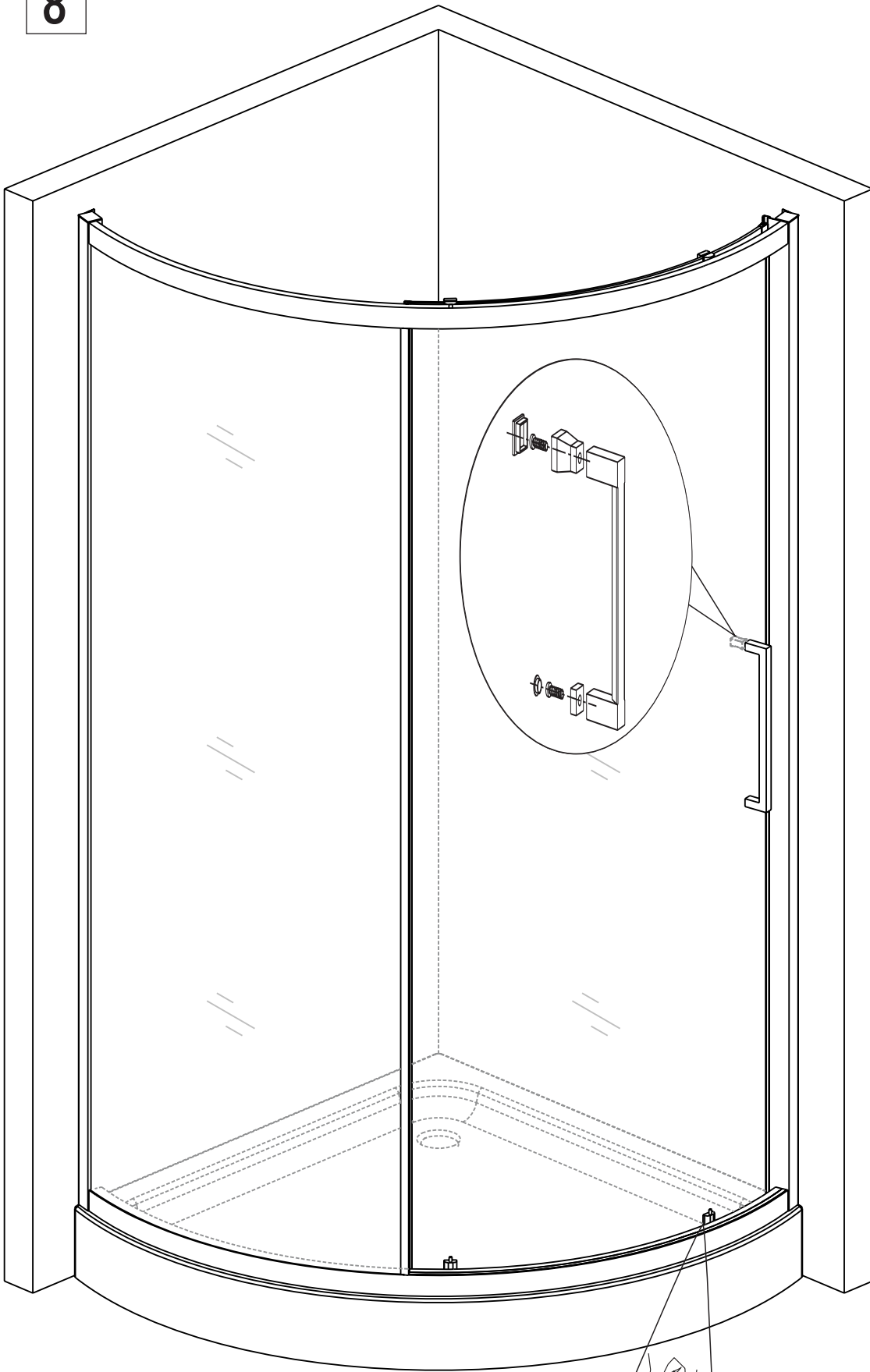


4

6

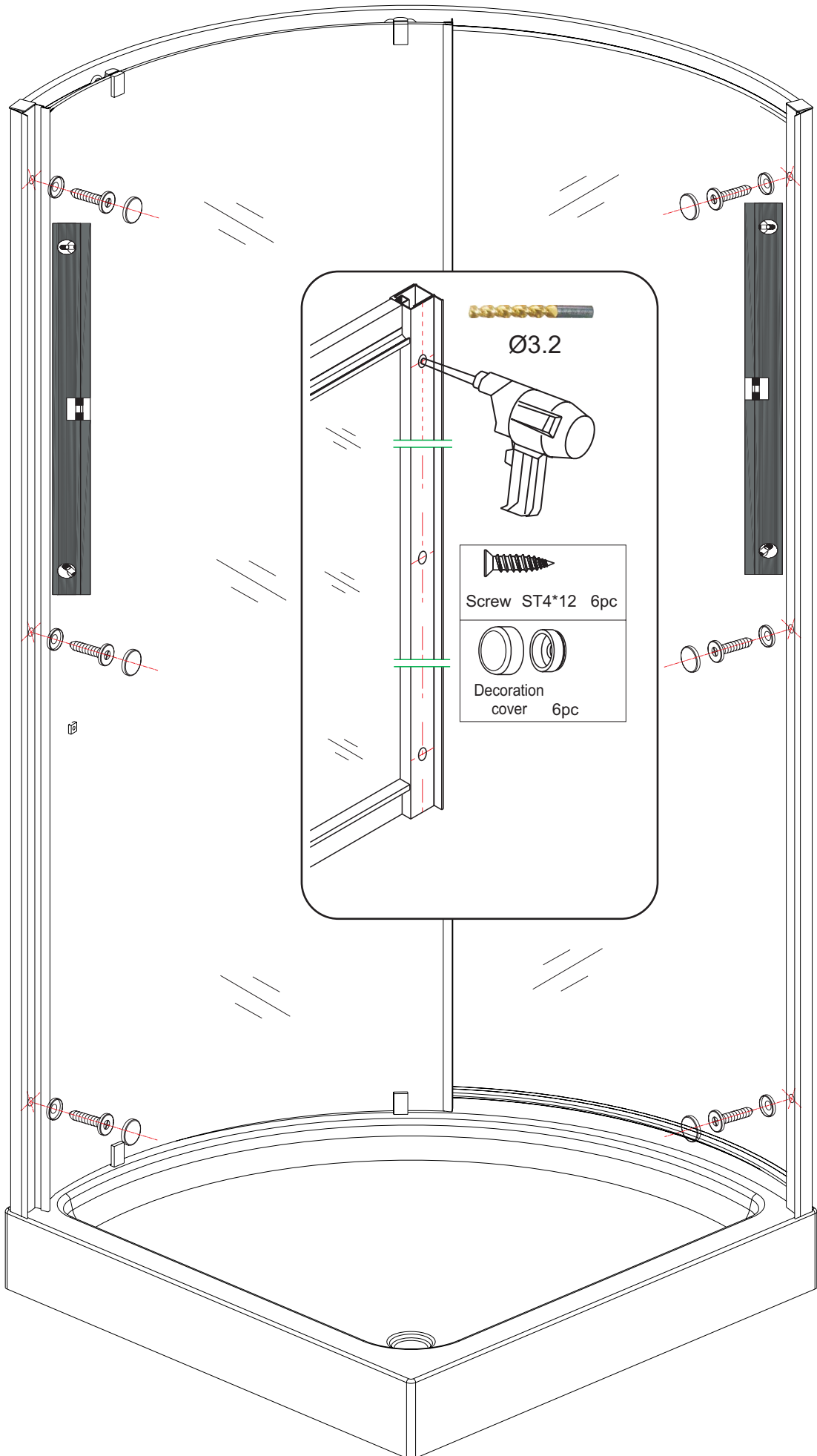


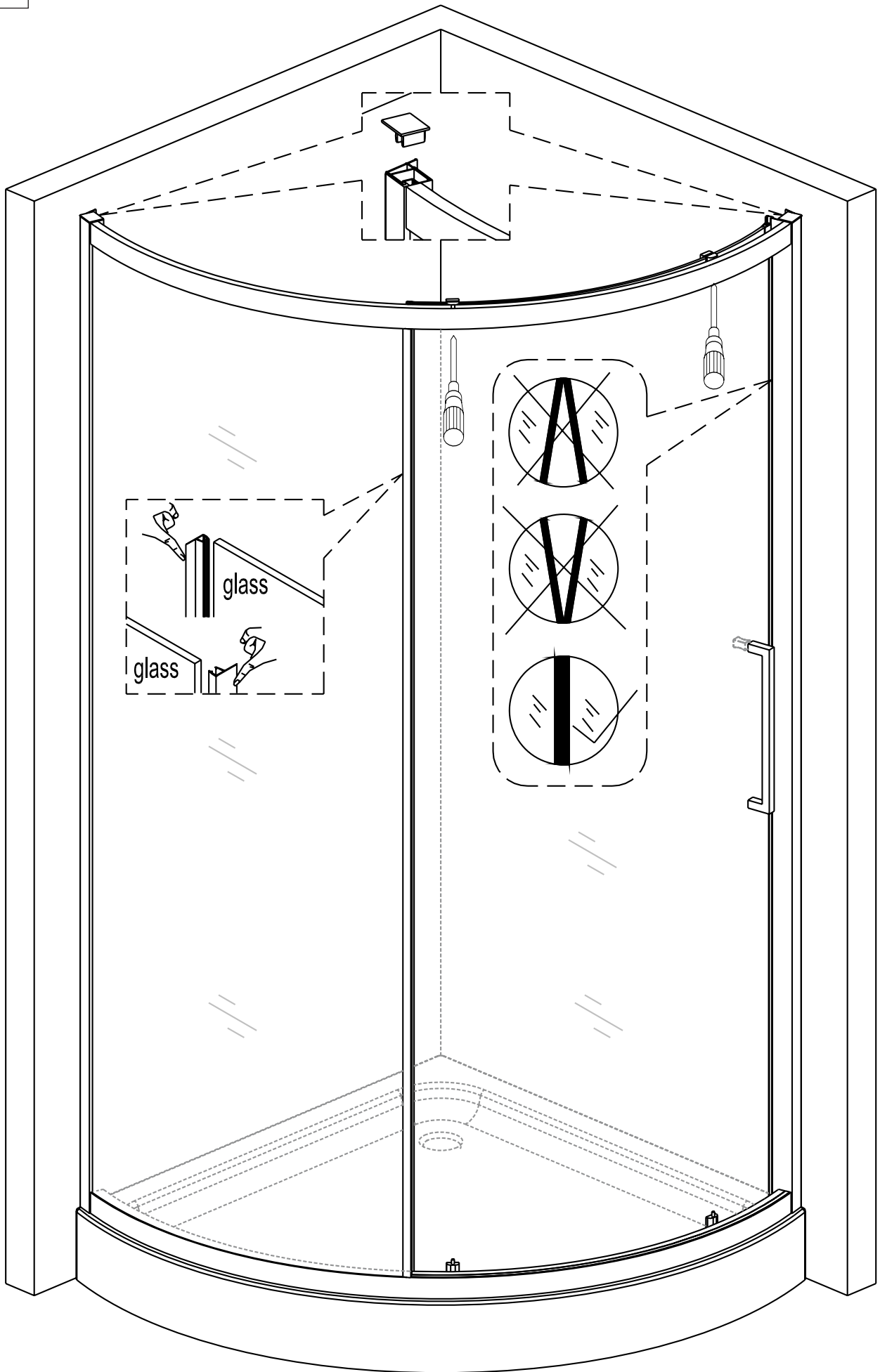




9

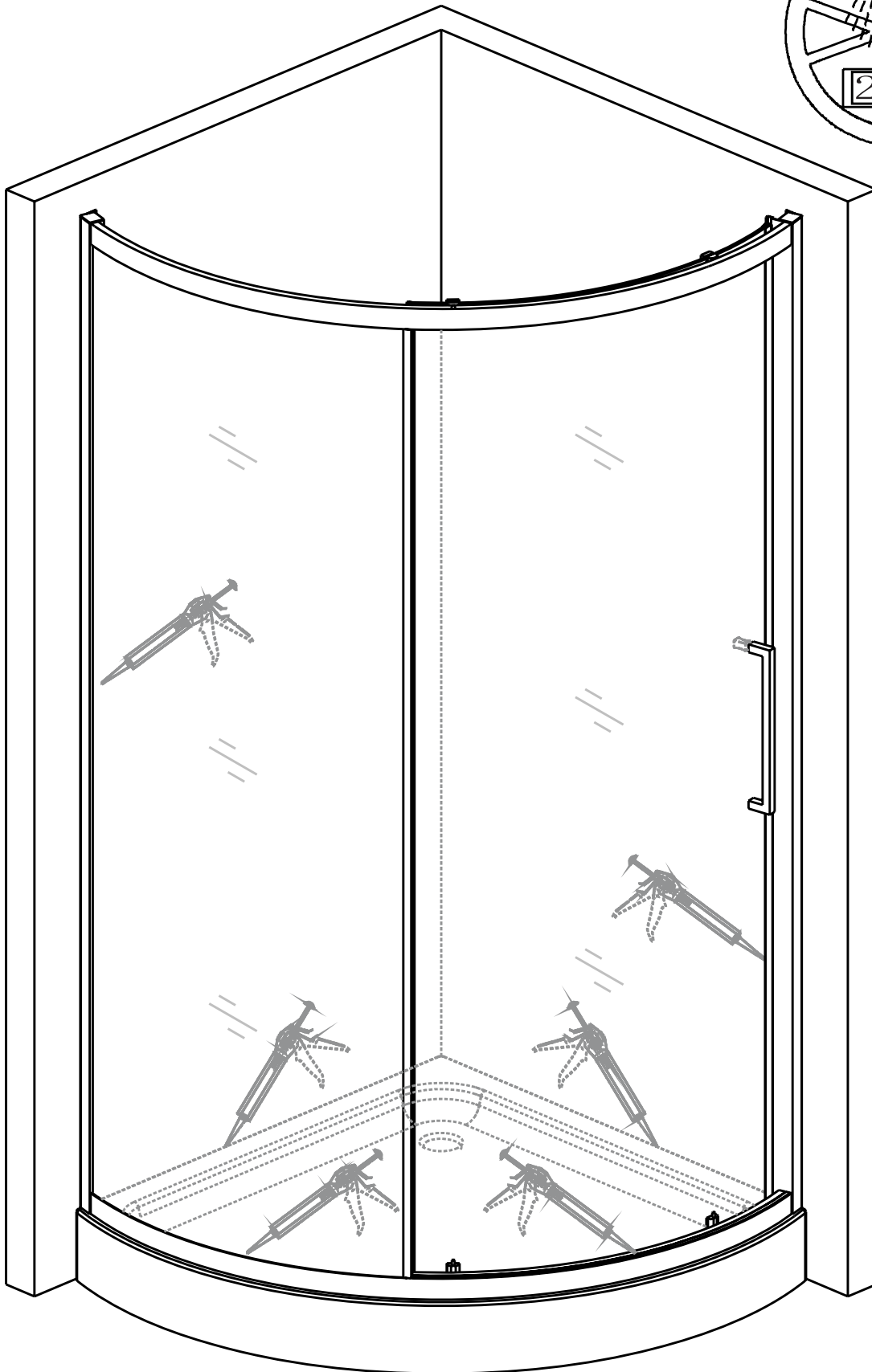
Frame and fixed door installation





11

Seal wall profile flanges to wall on inside vertically.
Seal gap between shower tray to wall on inside.
Seal bottom frame to shower tray horizontally on outside only.
Seal upright profile to wall from shower tray approx. 100mm vertically on outside.
Seal all vertical joints on bottom of frame on outside only.
Allow unit 24hrs to set.



Maintenance of Shower Enclosure

1. Cleaning

Please use a soft, dry cloth to clean the shower enclosure and shower tray. If there is minor dirt, please use a soft cloth or sponge dampened in a mild detergent to clean; to remove stubborn dirt, use alcohol.

When cleaning with bath detergent, do follow its instructions and use correctly. Incorrect using methods will result in bad effects on human body and may make the product appear some bad situation.

Do not use following items to clean: the acidic, alkaline solvents, drugs (such as hydrochloric acid), acetone thinners and other solvents and scouring powder, otherwise they will result in bad effects on human body and may make the product appear some bad situation.

2. Usage and maintenance of shower room roller

A. Sliding shower door, there are two kinds: slider and roller

B. Attention in usage:

- 1) Avoid over striking the movable door, which may cause the door loose.
- 2) To clean rails, wheels, sliders regularly, add lubricant (oil or lubricating wax);
- 3) Adjusting the screws of sliders on a regular basis to ensure the sliders effective carrying and good sliding to the movable doors

3. Maintenance of Tempered Glass

- 1) Do not use sharp objects against the surface to avoid damage;
- 2) Do not wipe the glass surface with corrosive liquids to avoid damaging the glossy surface;
- 3) Do not wipe the surface with a rough material to avoid scratches;

4. Maintenance of Aluminum Frame

A. Electrostatic painting products (referring to the white, bone, blue, yellow, purple and other solid spray type)

- 1) Prevent direct sunlight and prolonged exposure under the sunlight which will cause color fading.
- 2) Do not wipe with corrosive liquids or materials;
- 3) Do not use rough material (including toothpaste) for surface cleaning;
- 4) Do not scratch the surface with sharp objects.

B. Oxidation coloring products (such as gold, silver, matt silver, brush nickel silver)

Comparing with electrostatic painting products, oxidation color is not easy to fade, but due to its poorer hardness, please do not wipe with rough materials, especially sharp objects to scratch.

For stain on surface, please wipe using neutral cleanser

5. Usage and maintenance of Acrylic shower tray.

- 1) Do not use sharp objects against the surface to avoid damage;
- 2) Do not wipe the acrylic surface with corrosive liquids to avoid damaging the glossy surface;
- 3) Do not wipe the surface with rough materials to avoid scratches.